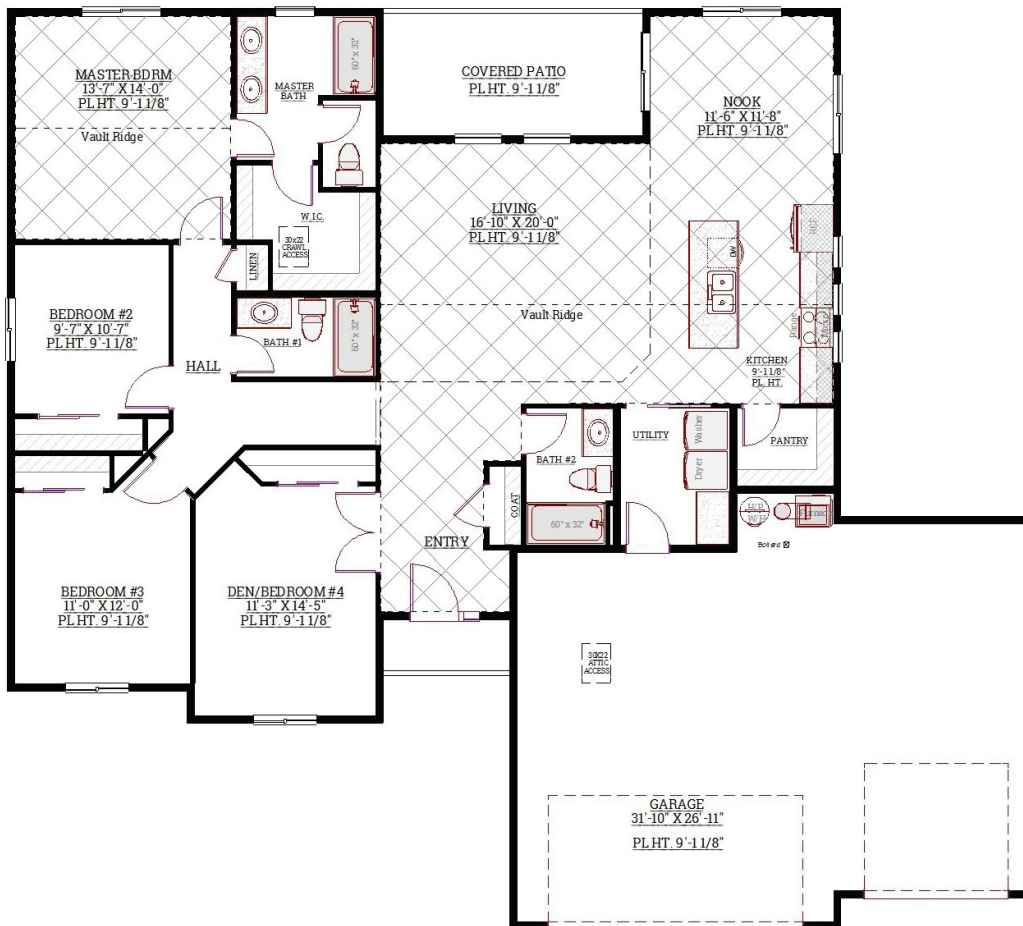




THE PARKSIDE

Plan Details



-  **1911 SF**
-  **4 Bedroom**
-  **3 Bath**
-  **3 Car Garage**
-  **1 Story**

1st Floor	1911 Sq Ft
Garage	507 Sq Ft
Total Area:	1797 Sq Ft
Width	50'
Depth	58'

Where Quality Meets Affordability



— HOMES —
 (509) 949-9022 TRI-CITIES
 (509) 713-0783 CHELAN